

FITMENT INSTRUCTIONS

Alu-Cab™



Shower Cube to Hercules (SH-BKT-RC-TY)

All rights reserved. No part of this document may be reproduced, translated, stored in a retrieval system, or transmitted, in any form or by any means, electronic, mechanical, photocopying, recording or otherwise, without prior written permission of the owner.

Review all instructions information carefully before installation.

Any damages, direct or incidental to the installer and/or property due to incorrect installation of any parts are the responsibility of the installer. Due to the various applications and fitment options available, the responsibility lies with the user to ensure all mounting points are secure and tight before every trip. If unsure, consult with your Distributor regarding the operations of our products.

Users are advised to be mindful of the load they are carrying and drive in accordance with road conditions.

DISCLAIMER

Alu-Cab

1. Shower Cubicle Fitment – Tools, Fasteners & Materials

The tables below show the equipment, i.e. tools and fasteners required to start the shower cubicle fitment onto a Hercules tent.

1.1. Tools & Items Required:

TOOLS
Ratchet
13mm Socket
13mm Ring Flat Spanner
Drill
Drill Bit Ø8.5
Rivnut gun (M8 TIP)

ITEM
Turpentine
Cloth
Black sealant, silicone or Sikaflex

1.2. Fasteners Supplied: (Included with Shower Cubicle)

ITEM	QTY
Hex head bolt M8X20	4
M8 flat washer	8
M8 Nyloc nut	4
M8 Plastic nut cap	12
M8 Rivnut	4
M8X100 Hex head bolt	4

1.3 Hardware Required: (Included with Shower Cubicle)

ITEM	DESCRIPTION	QTY
Shower cubicle	Shower cubicle assembly	1
Shower cubicle bag	Black Shower cubicle bag	1
Shower curtain	Grey shower curtain	1

1.4 Brackets Required: (Sold Separately)

494-AWN-TRPY-FNT-BRKT-01	Awning mounting bracket	2
494-AWN-TRPY-BCK-PLT-01	Back plate	4

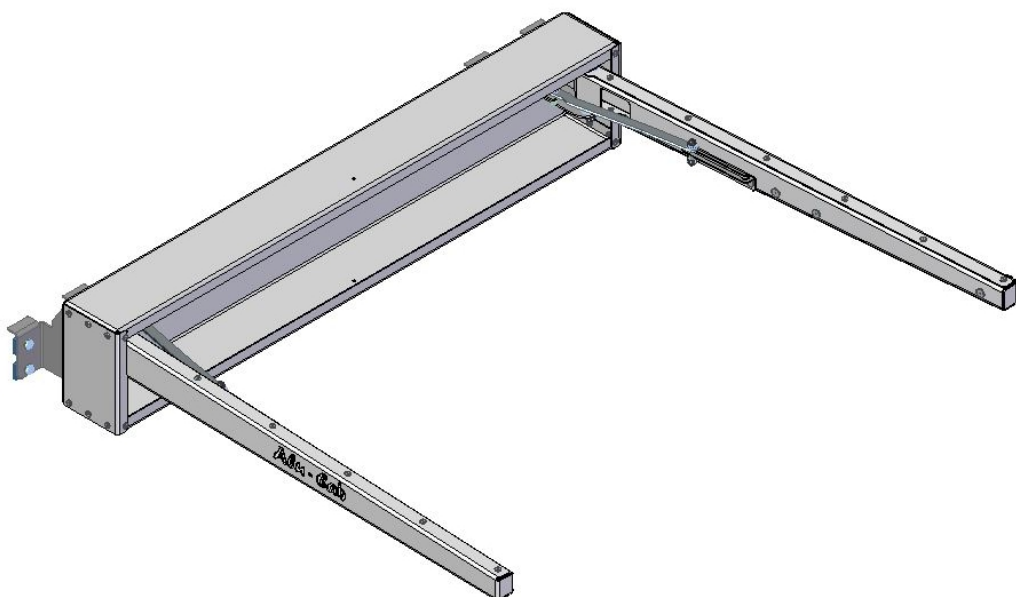


FIGURE 1: SHOWER CUBICLE

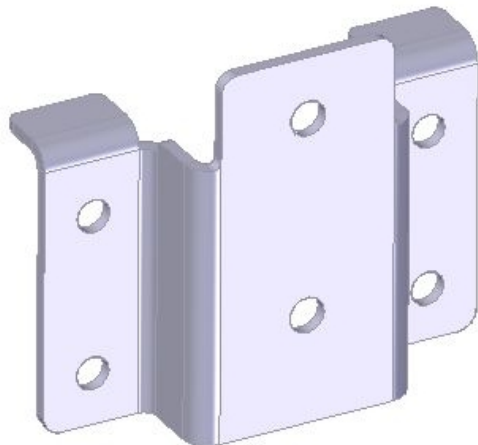


FIGURE 2: 494-AWN-TRPY-FNT-BRKT-01

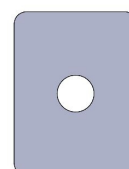


FIGURE 3: 494-AWN-TRPY-BCK-PLT-01



WARNING

Always wear appropriate PPE (Personal protection equipment) when fitting this product. Although the mounting kit is designed to be DIY, if you have any doubts or concerns, contact an accredited fitment centre to carry out the work. Alu-Cab will not be liable for any injury to persons, and/or damage to products and/or vehicles.

2. Mounting of the Brackets to the body

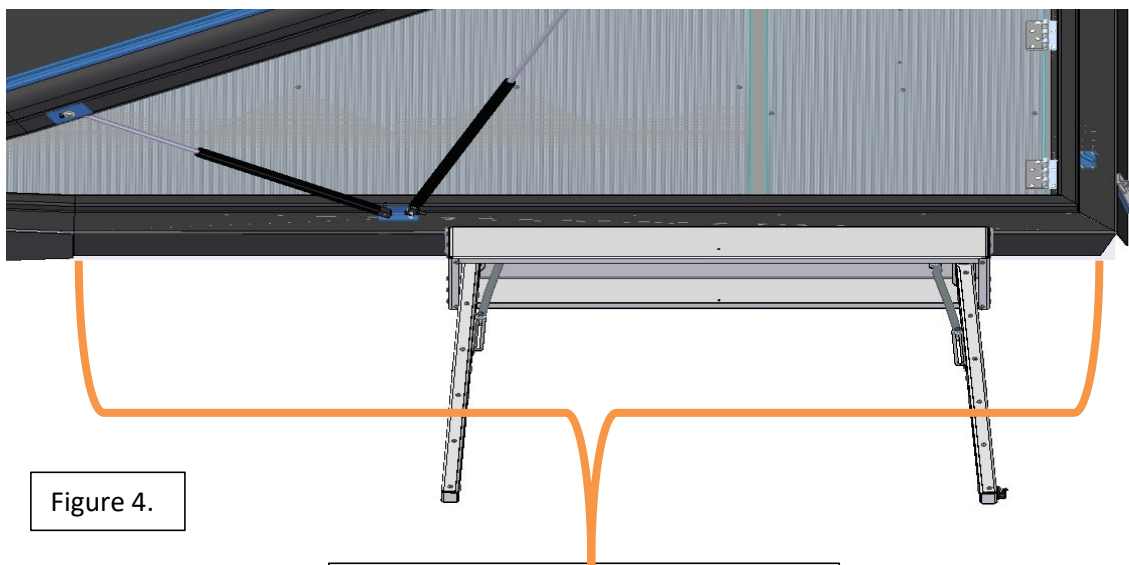


Figure 4.

Mount along the sides of the tent

Mounting of the brackets **(494-AWN-TRPY-FNT-BRKT-01)** can be positioned anywhere along the allocated area on the sides of the vehicle.

Fit the **(494-AWN-TRPY-FNT-BRKT-01)** *mounting bracket* flange on top edge of the tent base and use the holes on the bracket as a jig to drill holes into the tent base.

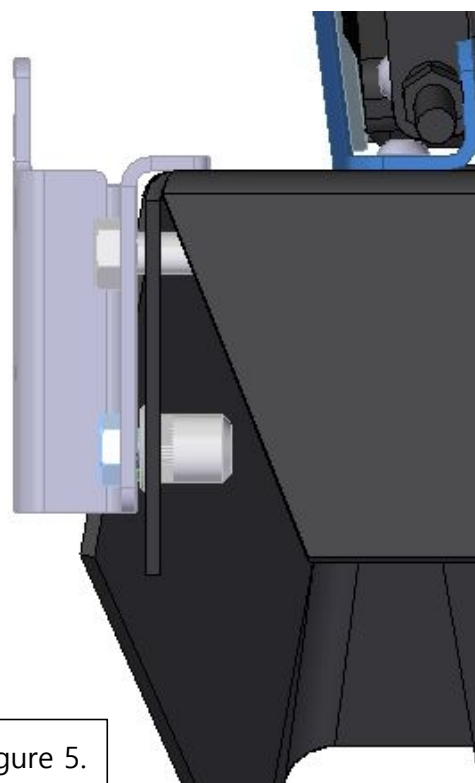
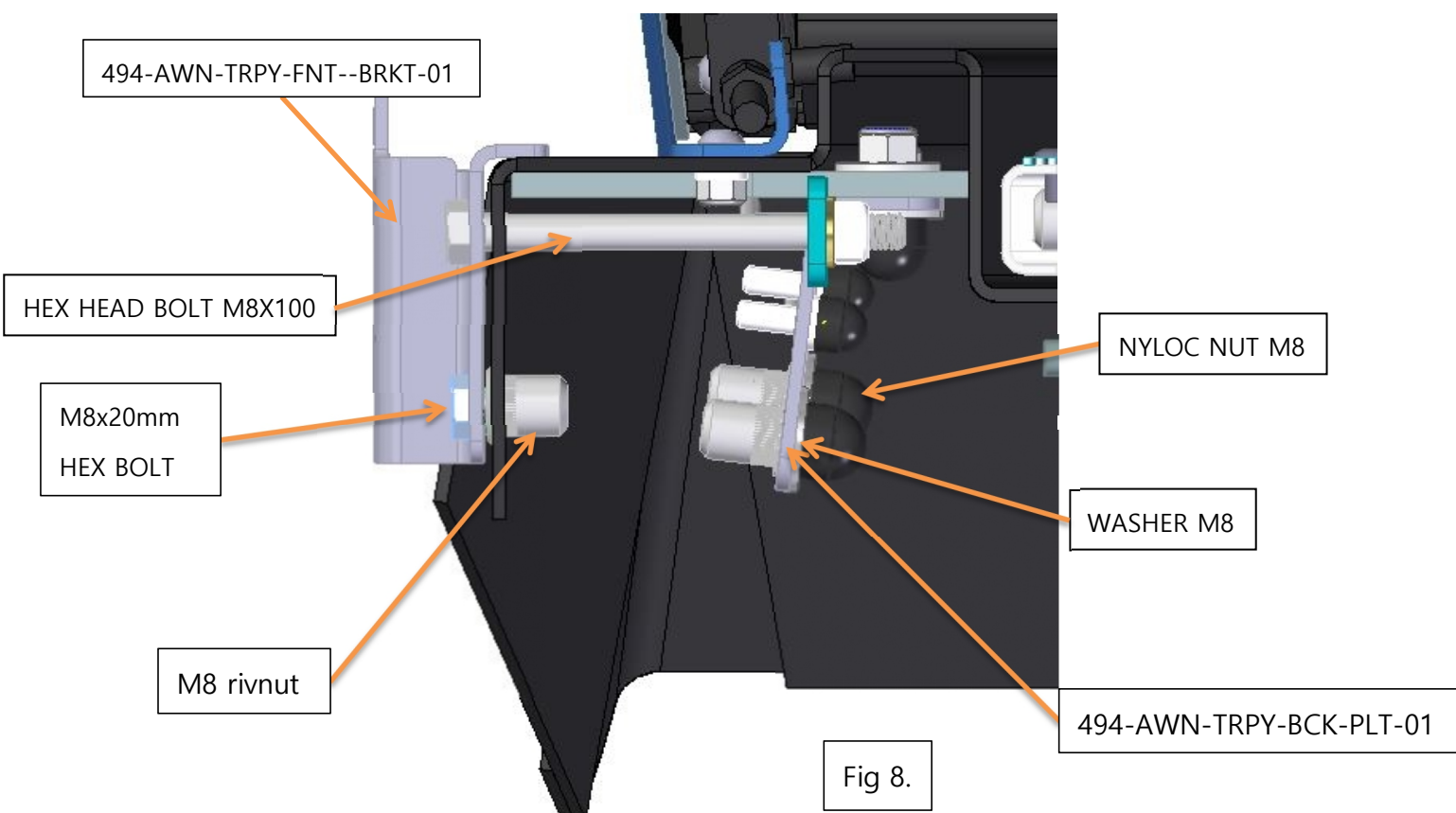
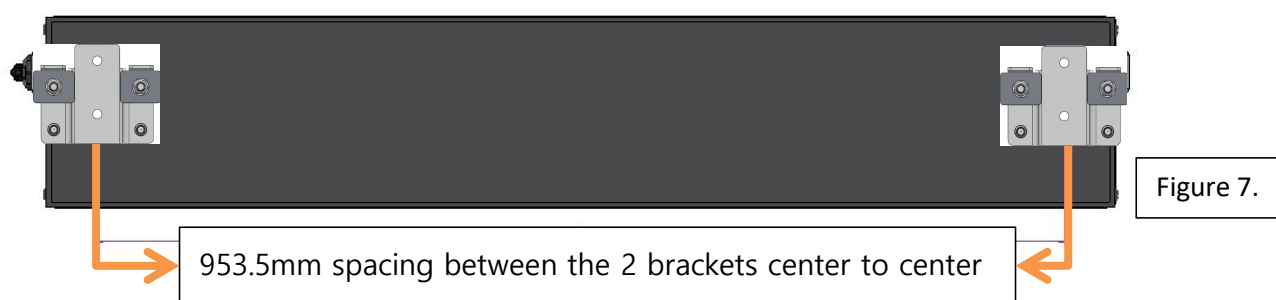
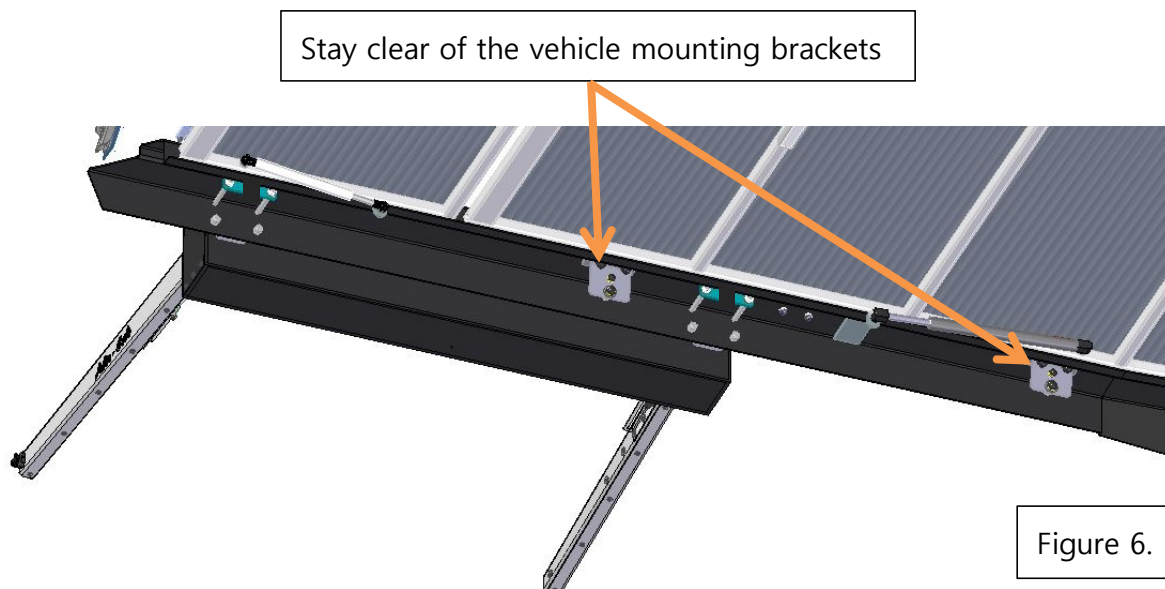


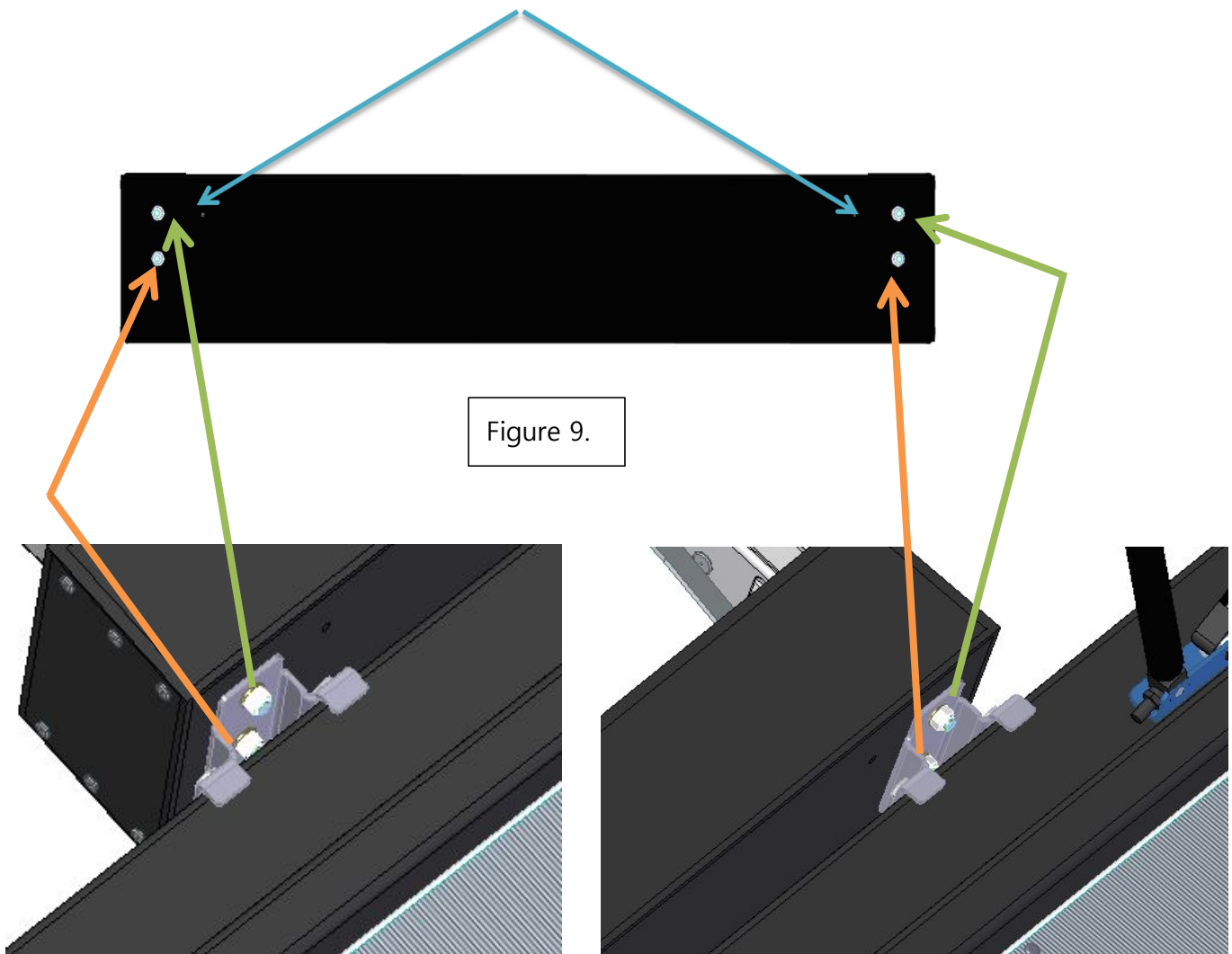
Figure 5.



Place M8 Plastic Nut Caps on all M8 Nyloc Nuts and hex bolts to finish of the mounting bracket fitment.

3. Mounting the shower cubicle.

Loosen these 4 M8 nuts before fitting to mounting brackets on the tent



Place shower cubicle assembly with the bag on mounting brackets and secure shower cubicle to the mounting brackets using the same nuts that where removed in **figure 9**.