



FITMENT INSTRUCTIONS

C2 Full Size Canopy Fitment - F150 5.5 (2021 - Current) [14th Generation]

Installation Instructions

Preliminary information

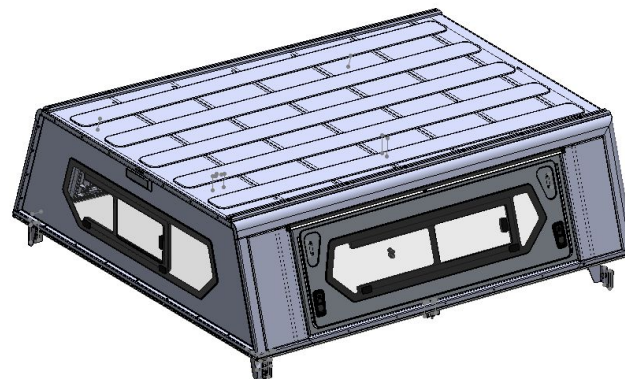
Installation and fitment instructions includes the tools required, fasteners included in the kit, and the hardware included in the kit.

Please follow the instructions and check installation steps with the images in this document.

Alu-Cab recommends that all sealing work is allowed to cure for 24 hours, after which you may drive the vehicle on normal paved roads. Before driving off-road with your Alu-Cab product or operating your roof conversion, an additional cure period of 48 hours is required.

Failure to follow these instructions will void your warranty. Please ensure that you follow the sealant manufacturers curing time as per their technical data sheet.

These times may differ slightly from the times we have recommended.



Service Enquiries email
queries@alu-cab.com

Installation Instructions

1

Canopy Fitment – Tools, Fasteners & Materials The tables below show the equipment, i.e. tools and fasteners required to start the canopy fitment of a FF21 5.5 Canopy

1.1

Tools & Items Required

TOOL
Ratchet
Spanner 13mm
Socket 13mm

1.2

Fasteners Supplied (included with canopy)

ITEM	QTY	ITEM	QTY
M8x20mm Hex Bolt	12	M8 Spring Washer	6
M8x80mm Hex Bolt	6	M8 Hex Nuts	6
M8 Plastic Nut Caps	18	M8 Nyloc Nuts	18
M8 Flat Washer	24		

Please be sure to lay out all parts provided on a table or flat surface in order to check that all required parts are accounted for and prevent potential frustration at a later stage.

Installation Instructions

1

Canopy Fitment – Tools, Fasteners & Materials The tables below show the equipment, i.e. tools and fasteners required to start the canopy fitment for a FF21 5.5 Canopy

1.3

Hardware Required

ITEM	QTY
C2 FS MOUNTING BRACKET TOP 03	2
C2 FS MOUNTING BRACKET TOP 04	2
C2 FS MOUNTING BRACKET TOP 05	2
C2 FS CLAMP BRACKET	6
C2 FS SLIDE GUIDE BRKT	6

1.4

Optional Consumables Required

ITEM
Turpentine
Shop Rags
Black sealant, silicone or Sikaflex
Window Cleaner

Please be sure to lay out all parts provided on a table or flat surface in order to check that all required parts are accounted for and prevent potential frustration at a later stage.

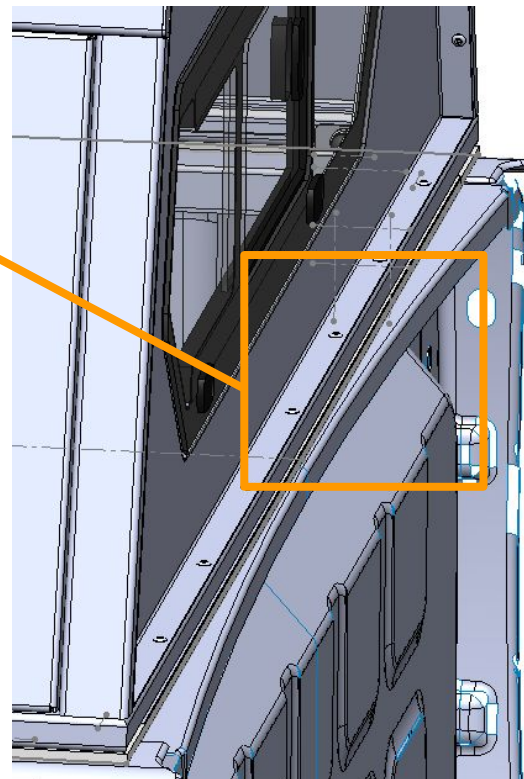
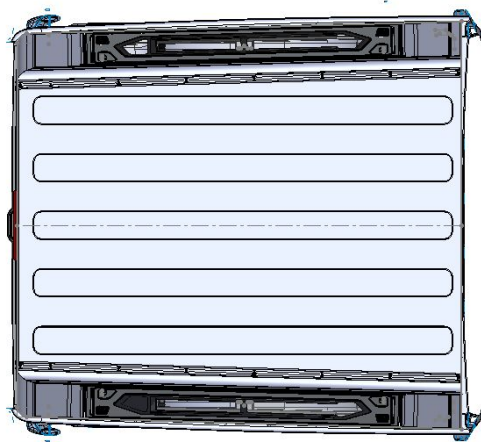
Installation Instructions

Canopy Fitment – Tools, Fasteners & Hardware

1.5

General Assembly

Ensure canopy is moved forward up to the end of the bed curve and equally spaced on the sides of the vehicle

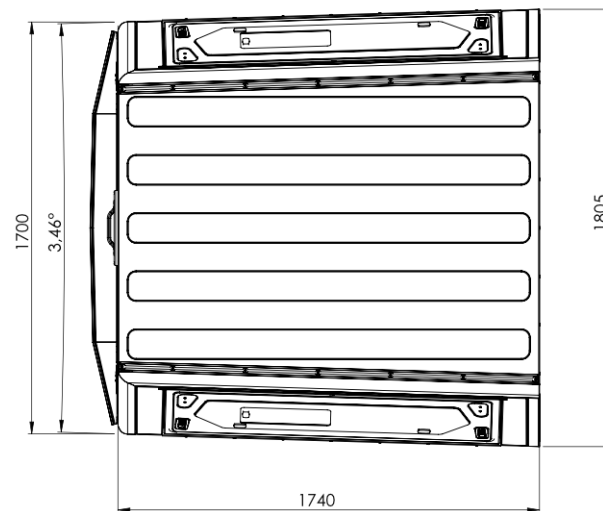
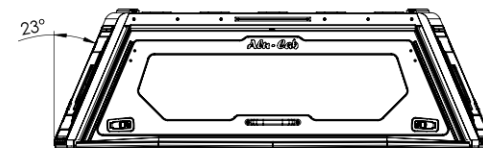
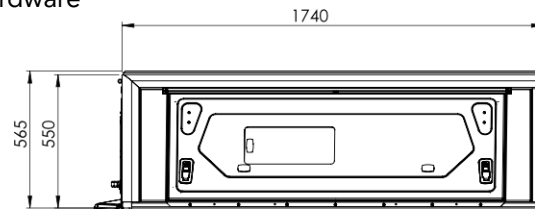


Installation Instructions

Canopy Fitment – Tools, Fasteners & Hardware

1.6

FF21 5.5 Overall dimensions

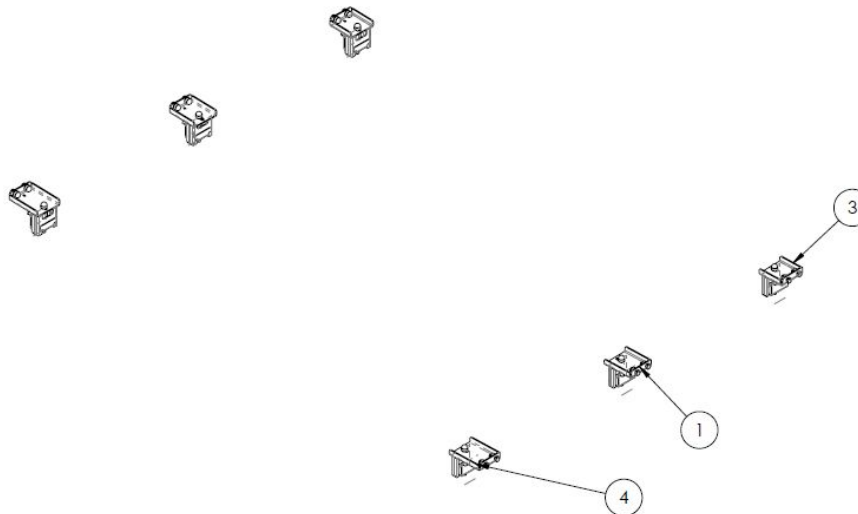


Installation Instructions

Canopy Fitment – Tools, Fasteners & Hardware

2.1

FF21 5.5 Mounting Kit



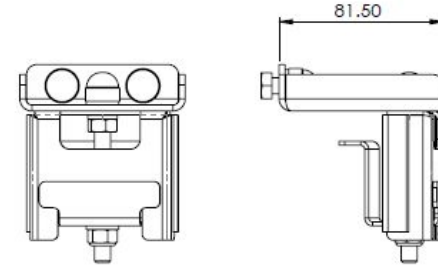
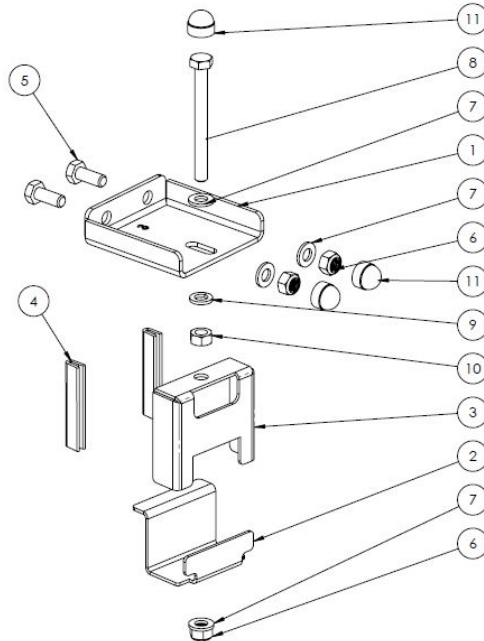
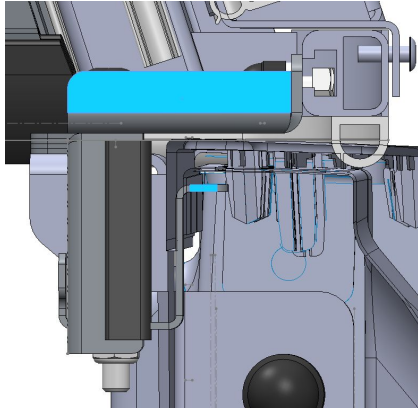
ITEM NO.	PART NUMBER	Revision	DESCRIPTION	QTY
1	C2-FSU-MNT-A01	01	C2 FS CLAMP MOUNT BRACKET 04 ASSEMBLY	2
3	C2-FSU-MNT-A04	00	C2 FS CLAMP MOUNT BRACKET 03 ASSEMBLY	2
4	C2-FSU-MNT-A05	00	C2 FS CLAMP MOUNT BRACKET 05 ASSEMBLY	2

Installation Instructions

Canopy Fitment – Tools, Fasteners & Hardware

2.2

C2-FSU-MNT-A04 [C2 FS CLAMP MOUNT BRACKET 03 ASSY]



ITEM NO.	PART NUMBER	REVISION	DESCRIPTION	QTY.
1	C2-FSU-MNT-R001	00	C2 FS CLAMP MOUNT RUBBER - RUB-P (60mm)	2
2	C2-FSU-MNT-P003	00	C2 FS CLAMP BRACKET	1
3	HEX-M8X20		M8X20 HEX BOLT S/S	2
4	NY-M8		M8 NYLOC NUT S/S	3
5	FW-M8		M8X16MM FLAT WASHER S/S - DIN 125	4
6	HEX-M8X80		M8X80 HEX BOLT S/S	1
7	SW-M8		M8 SPRING WASHER S/S	1
8	NUT-M8		M8 HEX NUT S/S	1
9	NCAP-M8		NUT CAP-08mm	3
10	C2-FSU-MNT-P006	00	C2 FS MOUNTING TOP BRACKET 03	1
11	C2-FSU-MNT-P004	00	C2 FS SLIDE GUIDE BRKT	1

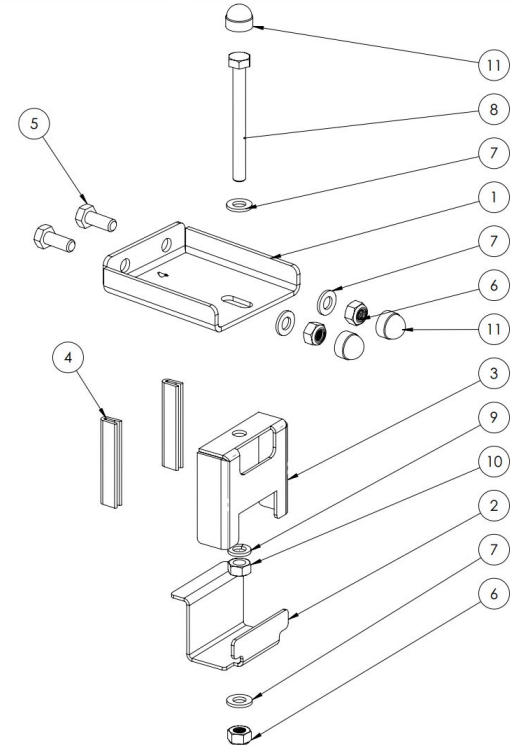
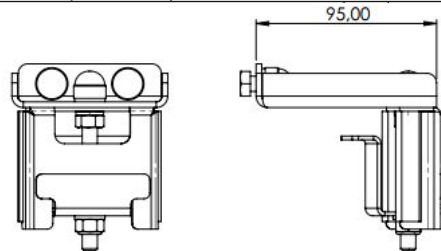
Installation Instructions

Canopy Fitment – Tools, Fasteners & Hardware

2.3

C2-FSU-MNT-A01 [C2 FS CLAMP MOUNT BRACKET 04 ASSY]

ITEM NO.	PART NUMBER	REVISION	DESCRIPTION	QTY.
1	C2-FSU-MNT-P002	01	C2 FS MOUNTING TOP BRACKET 04	1
2	C2-FSU-MNT-P003	00	C2 FS CLAMP BRACKET	1
3	C2-FSU-MNT-P004	00	C2 FS SLIDE GUIDE BRKT	1
4	C2-FSU-MNT-R001	00	C2 FS CLAMP MOUNT RUBBER - RUB-P (60mm)	2
5	HEX-M8X20		M8X20 HEX BOLT S/S	2
6	NY-M8		M8 NYLOC NUT S/S	3
7	FW-M8		M8X16MM FLAT WASHER S/S - DIN 125	4
8	HEX-M8X80		M8X80 HEX BOLT S/S	1
9	SW-M8		M8 SPRING WASHER S/S	1
10	NUT-M8		M8 HEX NUT S/S	1
11	NCAP-M8		NUT CAP-08mm	3

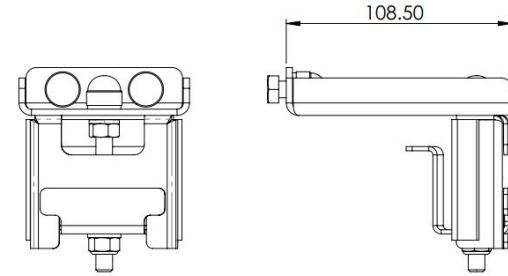
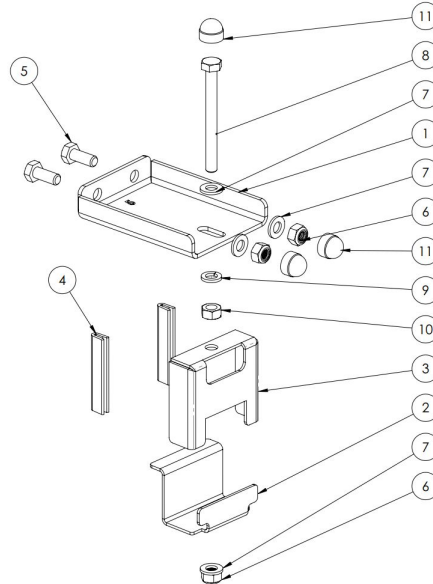
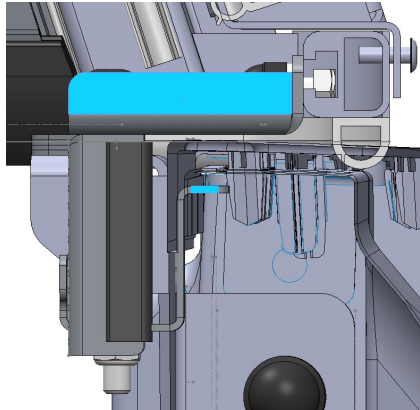


Installation Instructions

Canopy Fitment – Tools, Fasteners & Hardware

2.4

C2-FSU-MNT-A05 [C2 FS CLAMP MOUNT BRACKET 05 ASSY]



ITEM NO.	PART NUMBER	REVISION	DESCRIPTION	QTY.
1	C2-FSU-MNT-R001	00	C2 FS CLAMP MOUNT RUBBER - RUB-P (60mm)	2
2	C2-FSU-MNT-P003	00	C2 FS CLAMP BRACKET	1
3	HEX-M8X20		M8X20 HEX BOLT S/S	2
4	NY-M8		M8 NYLOC NUT S/S	3
5	FW-M8		M8X16MM FLAT WASHER S/S - DIN 125	4
6	HEX-M8X80		M8X80 HEX BOLT S/S	1
7	SW-M8		M8 SPRING WASHER S/S	1
8	NUT-M8		M8 HEX NUT S/S	1
9	NCAP-M8		NUT CAP-08mm	3
10	C2-FSU-MNT-P007	00	C2 FS MOUNTING TOP BRACKET 05	1
11	C2-FSU-MNT-P004	00	C2 FS SLIDE GUIDE BRKT	1

Installation Instructions

Canopy Fitment – Tools, Fasteners & Hardware

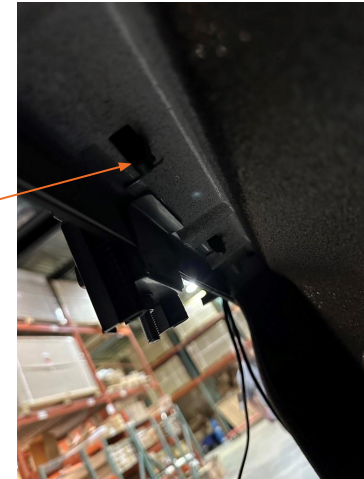
3.1

MOUNT BRACKET INSTALLATION

1. Mount top bracket and slide guide bracket assembly into nut slot.
2. When positioning the top bracket ensure the bracket lands between the plastic clips on the underside of the loadbin, as this is where the clamp bracket will rest.
3. The bracket with the 5 cut out should be closer to the cab,
4. The bracket with the 4 cut out should be mounted in the centre of the canopy..
5. The bracket with the 3 cut out should be mounted in the rear. All told there should be 6 mounting brackets installed



Space brackets so they fall
between the clips on the loadbin



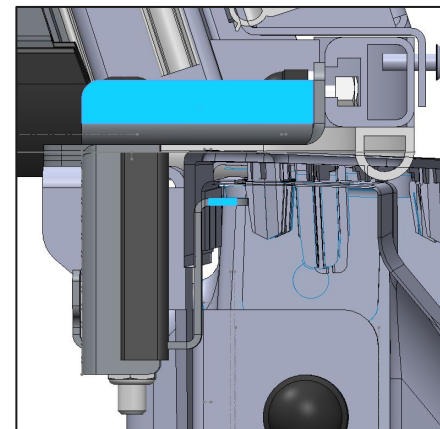
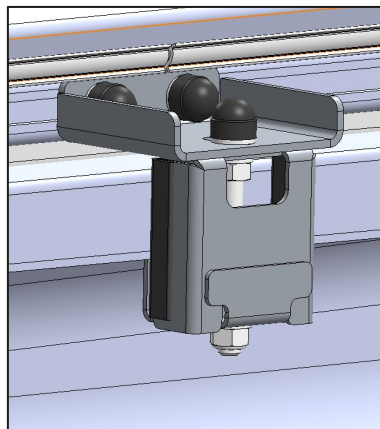
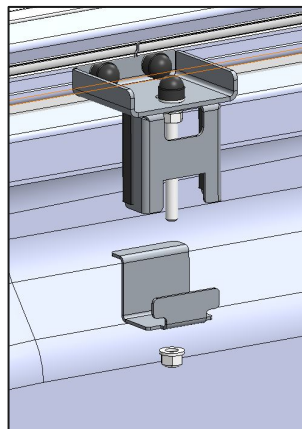
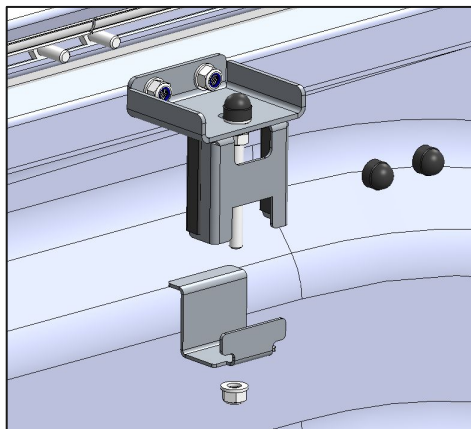
Installation Instructions

Canopy Fitment – Tools, Fasteners & Hardware

3.2

MOUNT BRACKET INSTALLATION (PART II)

1. With the top brackets in place; slide the Clamp Bracket on to the supplied M8x80 bolt.
2. Use the supplied nylock to finger tighten the clamp bracket, double check mounting brackets are equally spaced across load bin
3. Fully tighten bracket ensuring that it presses up against the inner lip of the load bin, securing the canopy and compressing the D rubber slightly



Disclaimer

All rights reserved. No part of this website may be reproduced, translated, stored in a retrieval system, or transmitted, in any form or by any means, electronic, mechanical, photocopying, recording or otherwise, without prior written permission of the owner.

Review all instructions information carefully before installation.

Any damages, direct or incidental to the installer and/or property due to incorrect installation of any parts are the responsibility of the installer. Due to the various applications and fitment options available, the responsibility lies with the user to ensure all mounting points are secure and tight before every trip.

If unsure, consult with your Distributor regarding the operations of our products.

Users are advised to be mindful of the load they are carrying and drive in accordance with road conditions.

WARNING

Always wear appropriate PPE (Personal protection equipment) when fitting our products. Although the mounting kit is designed to be DIY, if you have any doubts or concerns, contact an accredited fitment centre to carry out the work. Alu-Cab will not be liable for any injury to persons, and/or damage to products and/or vehicles.

While Alu-Cab Holdings takes reasonable measures to ensure that the contents of this Website are accurate and complete, Alu-Cab Holdings makes no representations or warranties, whether express or implied, as to the quality, timeliness, operation, integrity, availability or functionality of this Website or as to the accuracy, completeness or reliability of any information on this Website. Alu-Cab Holdings reserves the right to make changes, corrections and/or improvements to the information and to the products and programs described in such information, at any time without notice.

Alu-Cab Holdings will use reasonable endeavours to maintain the availability of the Website, except during scheduled maintenance periods, and reserves the right to discontinue providing the Website or the service or any part thereof with or without notice to you. Any person who accesses this Website or relies on this Website or on the information contained in this Website does so at his or her own risk.

Occasionally, at our discretion, we may include or offer third-party products or services on our website. These third-party sites have separate and independent privacy policies. We therefore have no responsibility or liability for the content and activities of these linked sites. Nonetheless, we seek to protect the integrity of our site and welcome any feedback about these sites.