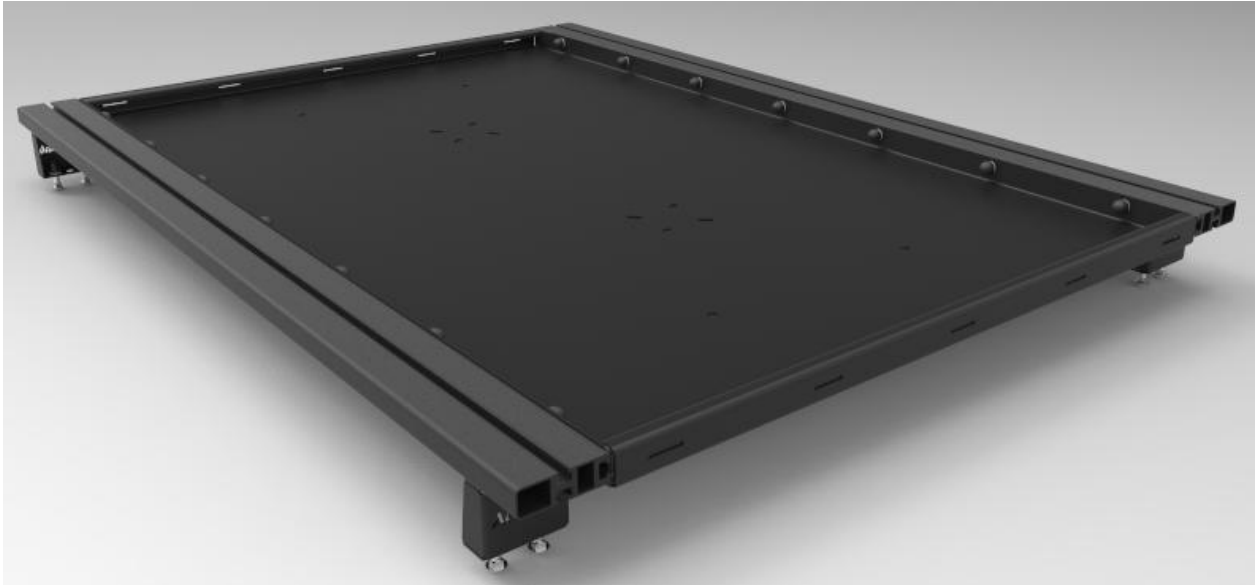


FITMENT INSTRUCTIONS



Roof Rack Tray

All rights reserved. No part of this document may be reproduced, translated, stored in a retrieval system, or transmitted, in any form or by any means, electronic, mechanical, photocopying, recording or otherwise, without prior written permission of the owner.

Review all instructions information carefully before installation.

Any damages, direct or incidental to the installer and/or property due to incorrect installation of any parts are the responsibility of the installer. Due to the various applications and fitment options available, the responsibility lies with the user to ensure all mounting points are secure and tight before every trip. If unsure, consult with your Distributor regarding the operations of our products.

Users are advised to be mindful of the load they are carrying and drive in accordance with road conditions.

1. Roof Rack Tray – Tools, Fasteners & Materials

The tables below show the equipment, i.e. tools, fasteners, hardware and consumables required to start and finish the fitment of the roof rack tray.

Hardware Supplied with Roof Rack Tray kit:

ITEM NO.	PART NUMBER	DESCRIPTION	QTY.
1	413-ROOF-TRAY-01-00	Roof Tray	1
2	M8 Plastic Nut Caps	M8 Plastic Nut Caps	14
3	M8x20 HEX BOLT	M8x20 HEX BOLT	14
4	M8 NYLOC NUT	M8 NYLOC NUT	14
9	M8 FLAT WASHER	M8 FLAT WASHER	14

1.1 Tools required to fit Roof rack tray kit:

TOOL	PURPOSE
13mm spanner	Spanner to tighten various bolts
13mm socket	Fastening various bolts
Ratchet	Fastening various bolts



WARNING

Always wear appropriate PPE (Personal protection equipment) when fitting this product. Although the mounting kit is designed to be DIY, if you have any doubts or concerns, contact an accredited fitment centre to carry out the work. Alu-Cab will not be liable for any injury to persons, and/or damage to products and/or vehicles.

Part Identification:



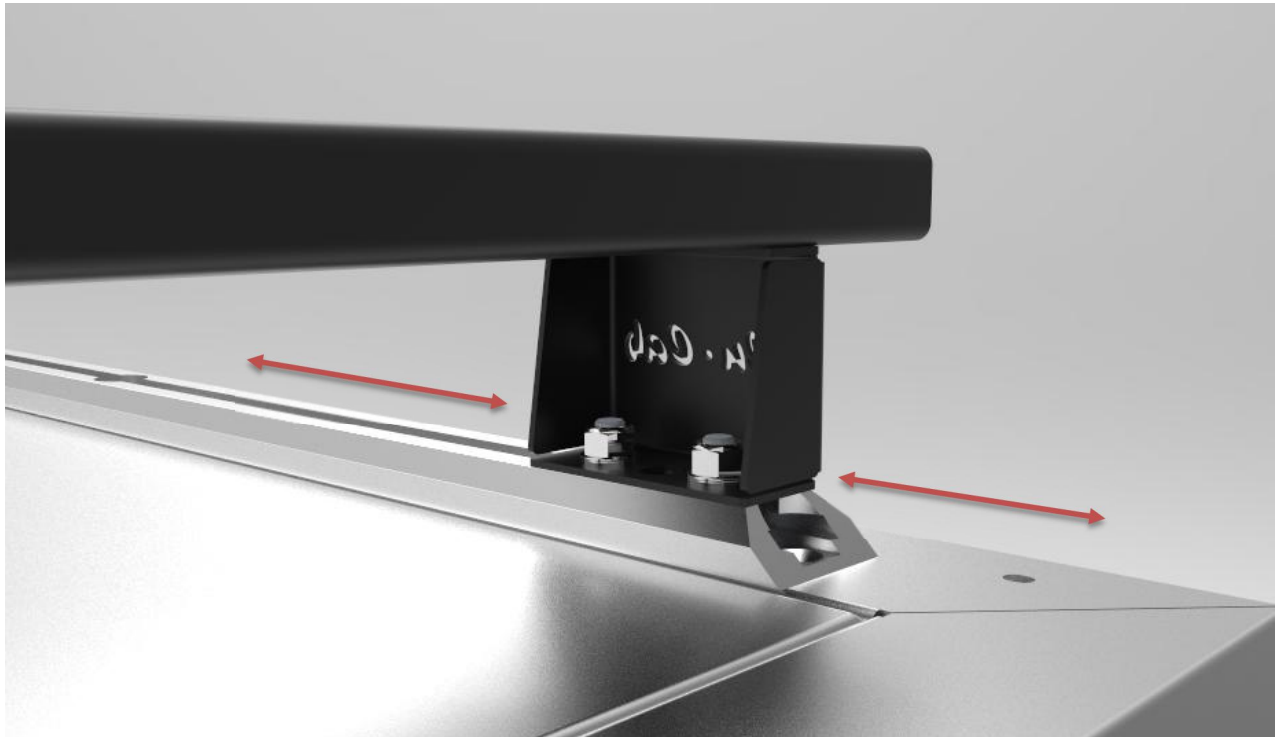
Roof Rack Tray

Please note:

- To use the Roof Rack Tray on your Alu-Cab Camper, Gen 3 Tent or Canopy you will need a set of Alu-Cab load bars with standard Load bar feet.
- To use the Roof Rack Tray on your Alu-Cab Camper, Gen 3 Tent or Canopy with the Load Bar Table Slide, you will need a set of Alu-Cab load bars with Roof Rack feet.

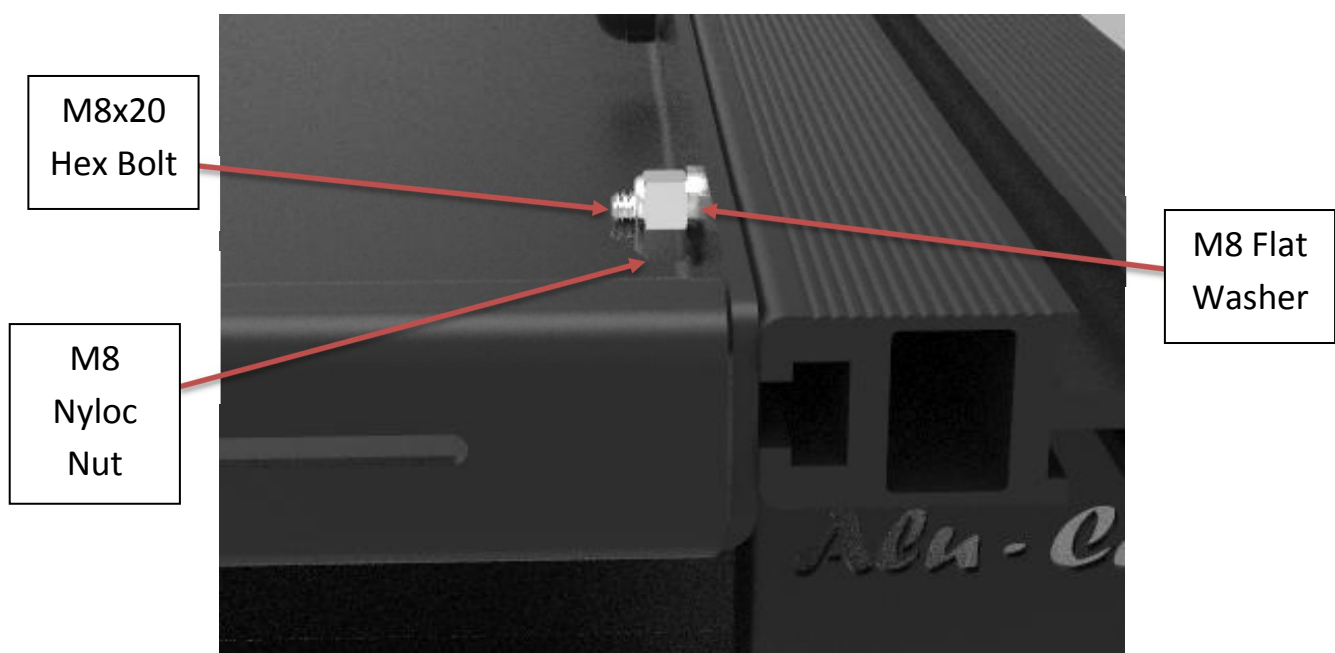
Step 1: Ensure you load bars are installed on your cargo rails.

The Nyloc nuts on the bottom of the load bar feet should not be tightened completely in order to allow the load bar to slide in the cargo rail. This will make it easier to manoeuvre while fitting the roof rack tray.

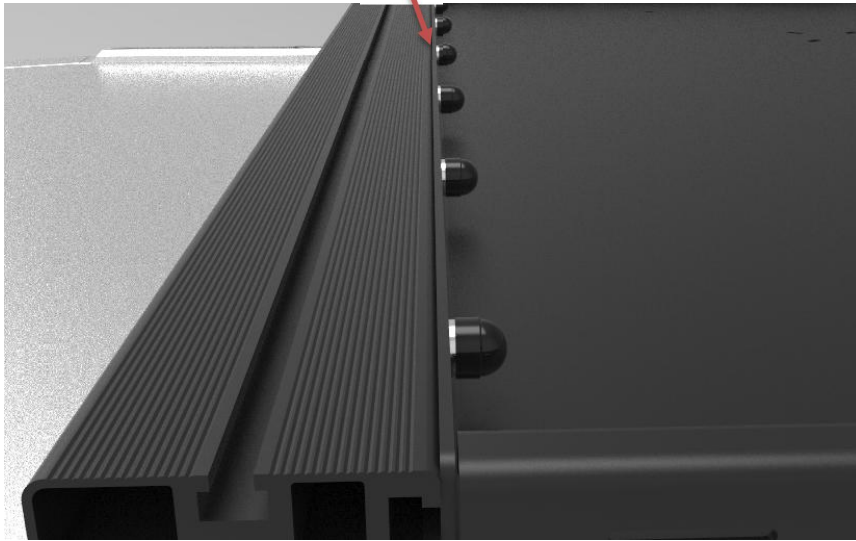


Step 2:

Mount the roof rack tray using the 14 x M8x20 Hex Bolts, 14 x M8x17 flat washers and M8 Nyloc nuts as shown below. Ensure that the load bars and Roof Rack Tray are centred before tightening.

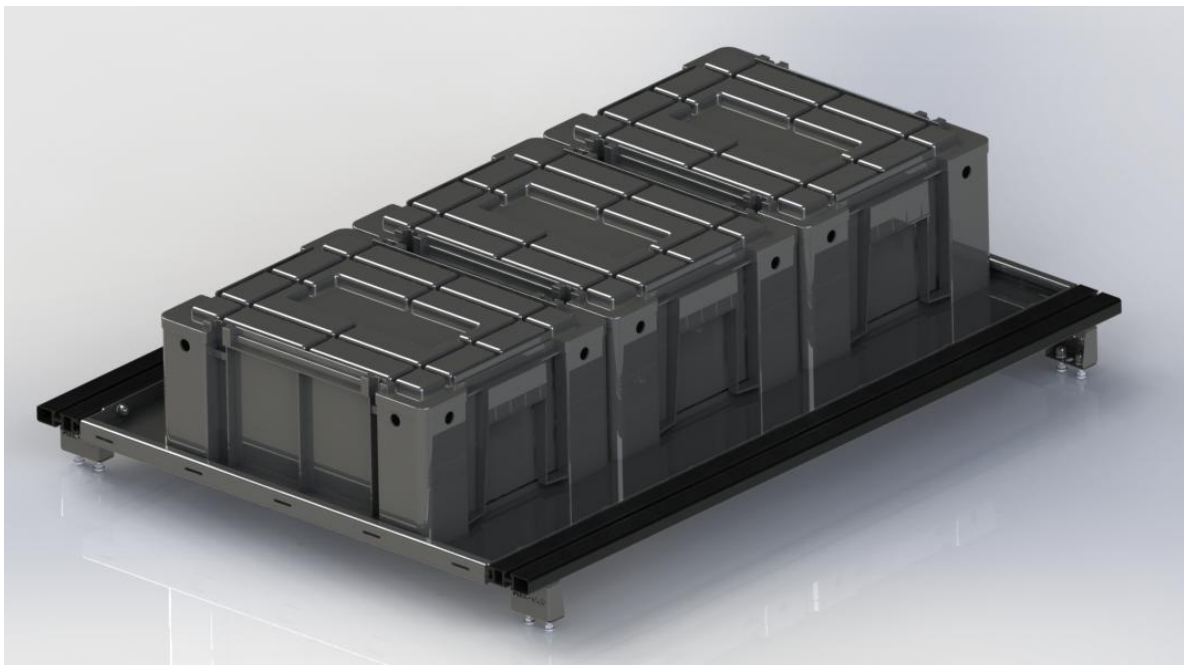


Step 3: Place plastic nut caps on all M8 Nyloc Nuts.

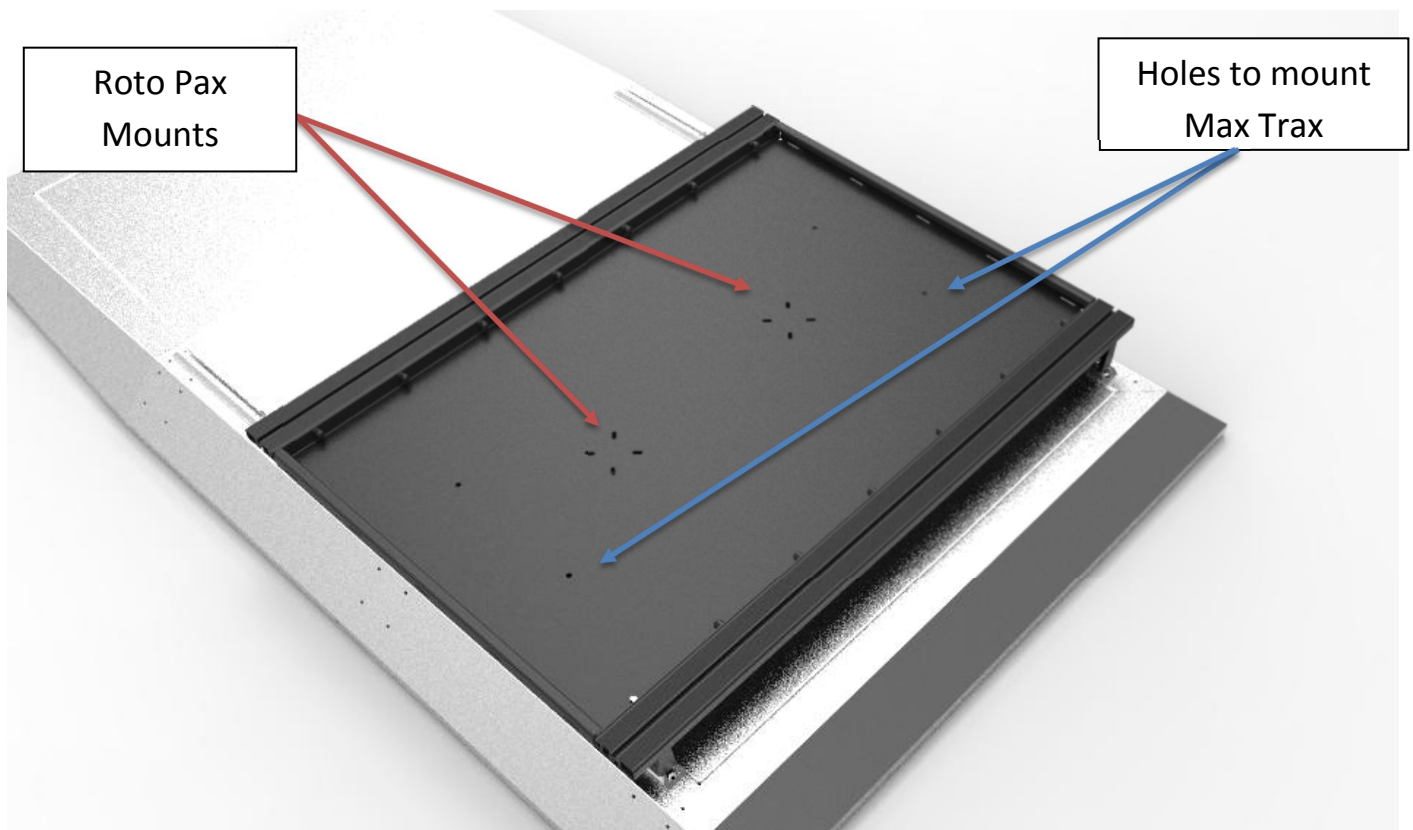


Possible Uses of the Roof Rack Tray:

Storage for 3 x Wolfpack Ammo Box Slides



Mounts for 2 x Roto Pax OR Max Trax recovery tracks



Storage for 2 x Jerry Cans (with Alu-Cab Jerry Can Holder) and 3 x Wolfpack Ammo Boxes.

